

# Germanium Valley

## Critical Mineral Target

**Tenures** 1121698, 1122608, 1125815, 1127346, 1128785, 1128789, 1128792, 1128795, 1128796      **Tenure Applications** 1127018, 1127023

**Commodities** Zinc, Lead, Silver, Germanium, Cadmium, Barite      **Area** 1357.94 Ha

The Germanium Valley is located approximately 17 kilometres north-northwest of Germansen Landing.

Sulphide mineralization occurs as discontinuous and irregular-shaped pods within arenaceous dolomite and dolomite of the Otter Lakes Group. This carbonate replacement showing is near the geological contact between slates and argillites of the Upper Devonian-Lower Mississippian Big Creek Group and the Otter Lakes Group. Mineralization is in the form of sphalerite and galena.

Disseminated galena and sphalerite occur within the Siluro-Devonian Echo Lake Group. The mineralization is found in stockwork that is iron bearing (siderite, hematite). Galena also occurs within quartz veins that cut the Echo Lake carbonates. The carbonates in this area consist of white to grey, coarse dolomite, limestone and limestone breccia. The strata can be thin to thickly bedded or massive and may be partially silicified.

In 1980 a chip sample over 4 metres was analysed 15.6 per cent combined lead-zinc (Assessment Report 7748).

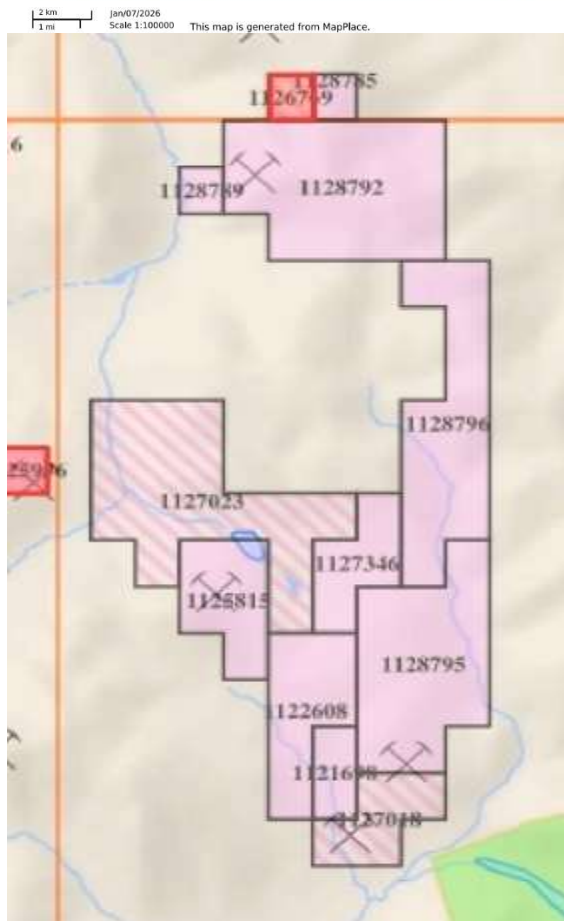
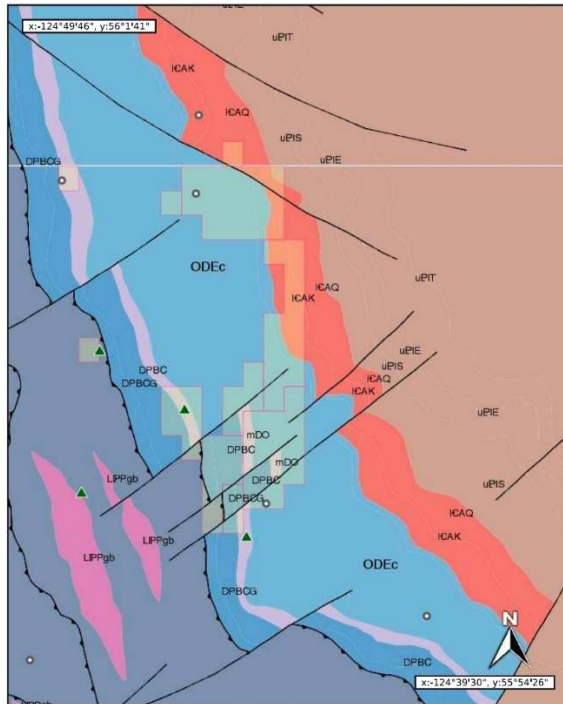
In 1989, a grab sample (FFE89-7-21) analysed 115 grams per tonne silver, 0.67 per cent lead, 14.7 per cent zinc and 0.22 per cent germanium (Exploration in British Columbia 1989, page 195)

In 2006 a select grab sample of a 3-10-centimetre-wide seam of siderite with galena that assayed 10.98 per cent lead, 41.25 per cent zinc, 256 grams per tonne silver, 0.253 per cent cadmium and 0.039 per cent germanium.

In 2019 Outcrop rock samples from the Jemima Main zone returned moderately high levels of zinc and silver: 14.85 per cent zinc and 116 grams per tonne silver (sample 19BID-12) and 21.7 per cent zinc and 96.5 grams per tonne silver (sample 19BID-13), with 19BID-12 also showing 5.15 per cent lead (Assessment Report 38519).

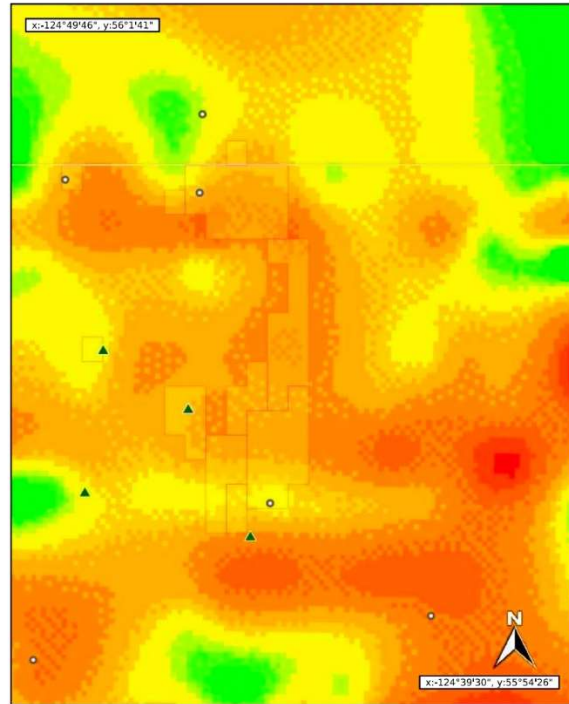
## Germanium Valley

Germanium Valley  
Geology - Bedrock w/ Faults



**River Rose Resources Ltd**

Germanium Valley  
1st Vertical Derivative - 100m Mag



2 km 1 mi Jan/07/2026 Scale 1:100000 This map is generated from MapPlace.

**JGP Mineral Exploration Ltd**

## **Germanium Valley**

*This property is offered for sale by way of cash (**\$40,000.00**) or working option to purchase.  
Preference given to companies willing to fund further exploration.*

*For more information, please contact:*

*Micheal Langille (250) 353-1723      [riverroseresourcesltd@gmail.com](mailto:riverroseresourcesltd@gmail.com)  
River Rose Resources Ltd*



**MINERAL EXPLORATION AND DEVELOPMENT**

View other available properties at: <http://www.riverroseresources.com>